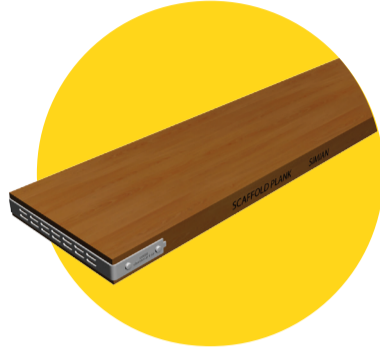


SCAFFOLDING BOARDS

✓ GOOD BOARDS

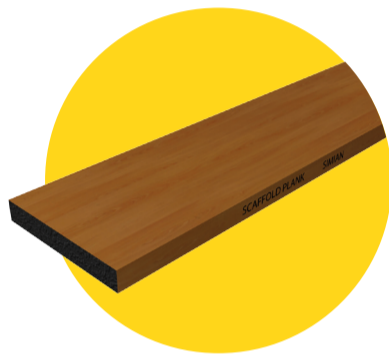
TIMBER BOARD

BS 2482. 38mm thick. Transom spacing should be 1.2m or less dependent on the load class. All scaffold boards should be inspected before use and the maximum overhang from the last transom is 150mm and minimum overhang should be 50mm.



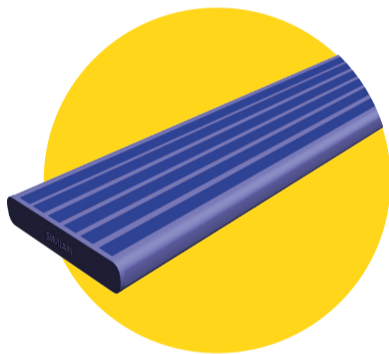
LVL BOARD

Laminated Veneer Lumber. Equivalent strength to a BS2482 board. Normally don't have an end band. Supported every 1.2m. Manufacturer's instructions must be checked regarding transom spacing.



COMPOSITE PLASTIC BOARD

Support every 1.2m. Follow manufacturer's instructions. Dimensions vary from 450mm long to 4m long. It should be 225mm wide and 38mm thick.



SOLE BOARD

This goes under the baseplate, it can be from 450mm long to 4m long. It should be 225mm wide and 38mm thick.



GANG NAIL PLATE BOARD

This board can be supplied with or without an end band and the gang nail plate must be 150mm from the end of the board. This complies with BS2482.



✗ BAD BOARDS

SPLIT

Split boards should be cut down to a reusable size and the damaged section should be discarded



WARPED AND TWISTED

Warping or twisting occurs naturally when exposed to dampness and dry conditions. Boards that move when stood on should be secured or replaced.



WORN OR IMPACTED

A board damaged by impact from a heavy object. In this case, scaffold tubes. The board should be scrapped.



NAILS

Boards should be inspected after use and nails should be removed prior to the board being brought back into service.



NOTCHED

Notching should be avoided where possible, but when unavoidable, the notch should not exceed 50mm x 50mm and the board should be supported on both sides of the notch.



Simian Skill provides a range of services to meet the diverse needs of the scaffolding and work at height industry across the globe. With a reputation for our **world-renowned scaffolding training** and health and safety consultancy, we are the **global experts** specialising in workplace access and working at height.

Website:
www.simian-risk.com

Telephone:
00 971 43 695 067

Email:
hello@simian-risk.com


SIMIAN SKILL
INTERNATIONAL SCAFFOLDING TRAINING